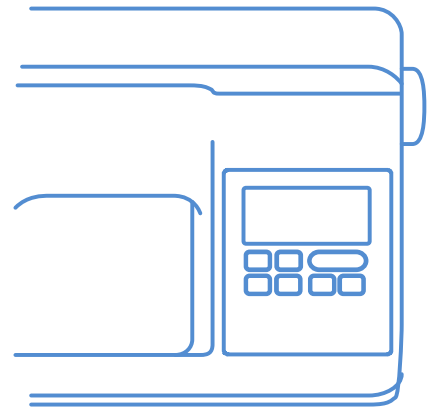


brother



Guide de référence rapide

Synthèse en Français

Veillez à lire ce document avant d'utiliser la machine.

Nous vous conseillons de conserver ce document à portée de main pour vous y référer ultérieurement.

Avant d'utiliser votre machine pour la première fois, veuillez lire les « INSTRUCTIONS DE SÉCURITÉ IMPORTANTES » indiquées dans le Manuel d'instructions. (pp. i et ii)

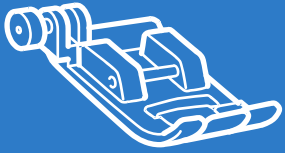
Reportez-vous au Manuel d'instructions pour des informations détaillées.

Les écrans de ce guide sont en anglais pour les explications de base.

Pour plus de détails sur les motifs de broderie intégrés, consultez le Guide de motifs de broderie.

Table des matières

Accessoires	2
Accessoires inclus.....	2-3
Accessoires en option.....	2-3
Bobinage/installation de la canette	4-5
Enfilage supérieur	6-7
Sélection et couture de motifs	8
Points utilitaires.....	8
Points décoratifs.....	9
Points de caractères.....	9
Sommaire des motifs de point	10
Points utilitaires.....	10
Points décoratifs.....	11
Points de caractères.....	12
Préparation de la broderie	14
Sélection des motifs de broderie	16



Accessoires

◆◆ Accessoires inclus

1.	2.	3.	4.	5.		
6.	7.	8.	9.	10.	11.	12.
13.	14.	15.	16.	17.	18.*1	19.*2
20.	21.	22.	23.	24.	25.	26.
27.	28.	29.	30.	31.	32.	33.
34.	35.	36.	37.	38.	39.	40.
41.	42.	43.	44.	45.	46.	

*1 2 aiguilles 75/11,
2 aiguilles 90/14,
2 aiguilles 90/14 : aiguille à pointe boule (dorée)

*2 aiguille 2/11

*1 75/11 2 naalden,
90/14 2 naalden,
90/14 2 naalden: ballpointnaald (goudkleurig)

*2 2/11 naald

◆◆ Accessoires en option

1.	2.	3.	4.	5.	6.	7.
8.						



Remarque

- La vis du support du pied-de-biche est disponible auprès de votre revendeur Brother agréé. (code de référence: XG1343-001)
- Le tiroir d'accessoires pour pied-de-biche est disponible auprès de votre revendeur Brother agréé. (code de référence: XF8650-001)

◆◆ Accessoires inclus

N°	Nom de la pièce	Code de la pièce	
		Continent américain	Autres
1	Pied zigzag « J » (sur la machine)		XF3022-001
2	Pied pour monogrammes « N »		XD0810-031
3	Pied pour faulpage « G »	G	XC3098-081
4	Pied pour fermetures à glissière « I »		X59370-021
5	Pied pour point invisible « R »		XE2650-001
6	Pied pour boutons « M »		XE2643-001
7	Pied pour boutonnières « A »		XC2691-023
8	Pied de broderie « Q »		XD0474-151
9	Pied ouvert	SA186	F060: XE1094-101
10	Pied-de-biche non adhérent	SA114	F007N: XC1949-052
11	Pied-de-biche de guidage de points « P »	SA160	F035N: XC1969-052
12	Pied réglable pour fermetures à glissière/passepois	SA161	F036N: XC1970-052
13	Pied pour quilting (courtepointe) ouvert en mouvement libre « O »	SA187	F061: XE1097-001
14	Pied à double entraînement	SA140	F033N: XC2214-052
15	Pied pour quilting (courtepointe) 1/4" / pouce	SA125	F001N: XC1944-052
16	Guide pour quilting (courtepointe)	SA132	F016N: XC2215-052
17	Couteau raseur « S »	SA177	F054: XC3879-152
18	Jeu d'aiguilles		X58358-021
19	Aiguille jumelée		X59296-121
20	Canette (4) (L'une se trouve sur la machine.)	SA156*3	SFB: XA5539-151
21	Découpeur		XF4967-001
22	Ciseaux		XC1807-121
23	Brosse de nettoyage		X59476-051
24	Perce-œillet		XZ5051-001
25	Tournevis (grand)		XC8349-021
26	Tournevis (petit)		X55468-051
27	Tournevis en forme de disque		XC1074-051
28	Porte-bobine horizontal		XC4654-251
29	Couvercle de bobine (grand)		130012-024
30	Couvercle de bobine (moyen) x 2 (L'un se trouve sur la machine.)		XE1372-001
31	Couvercle de bobine (petit)		130013-124
32	Centre amovible pour bobine de fil (bobine de fil mini/très grande)		XA5752-121
33	Filet de la bobine		XA5523-020
34	Genouillère		XA6941-052
35	Boîtier de la canette standard (repère vert sur la vis, sur la machine)		XG2058-001
36	Boîtier de la canette alternatif (sans couleur sur la vis)		XG2062-001
37	Pédale		XZ5098-001 (zone UE) XZ5100-001 (autres zones)
38	Jeu de cadre de broderie (très grand, positions multiples) H 30 cm x L 13 cm (H 12" / pouces x L 5" / pouces)	SA445	EF85: XG2203-001
39	Jeu de cadre de broderie (grand) H 18 cm x L 13 cm (H 7" / pouces x L 5" / pouces)	SA444	EF84: XF1080-001
40	Fil de canette à broder (épaisseur 60, blanc)	SA-EBT	EBT-CEN: X81164-001
41	Sac d'accessoires		XC4487-021
42	Protection rigide		XG5628-001
43	Ensemble de feuilles quadrillées		XC4549-020
44	Manuel d'instructions		
45	Guide de référence rapide		Contactez votre revendeur
46	Guide de motifs de broderie		Brother agréé.

*3 SA156 est une canette de catégorie 15.

◆◆ Accessoires en option

Les éléments suivants sont des accessoires en option vendus séparément par votre revendeur Brother agréé.

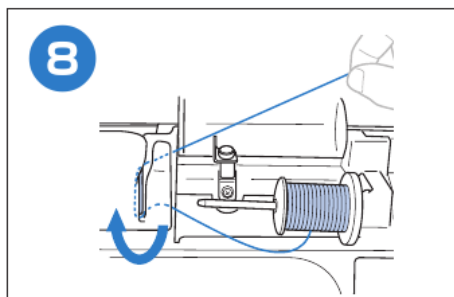
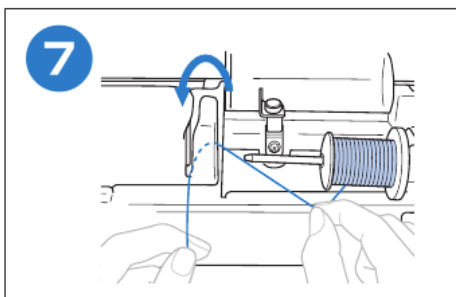
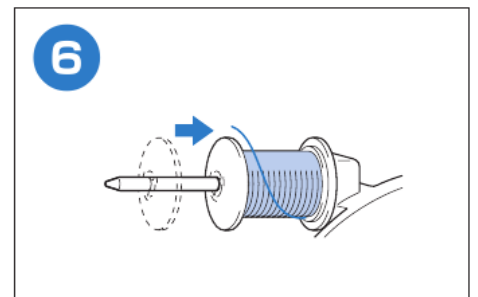
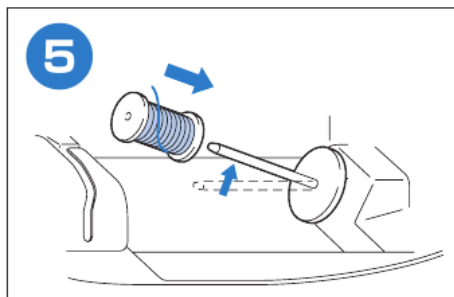
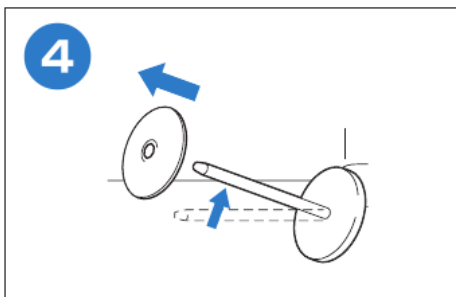
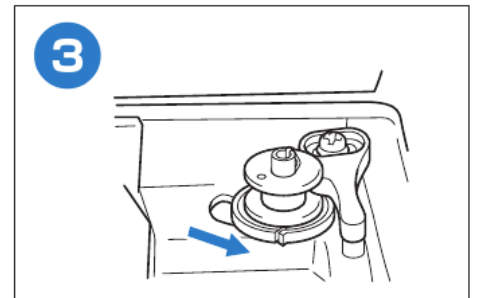
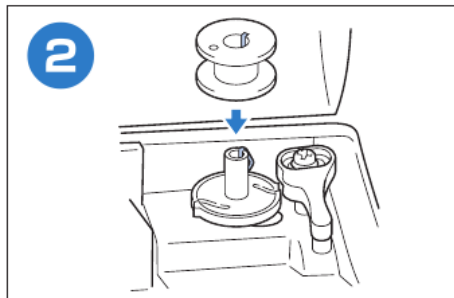
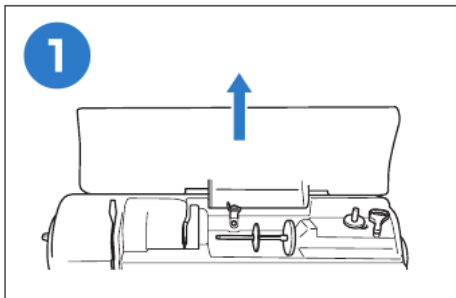
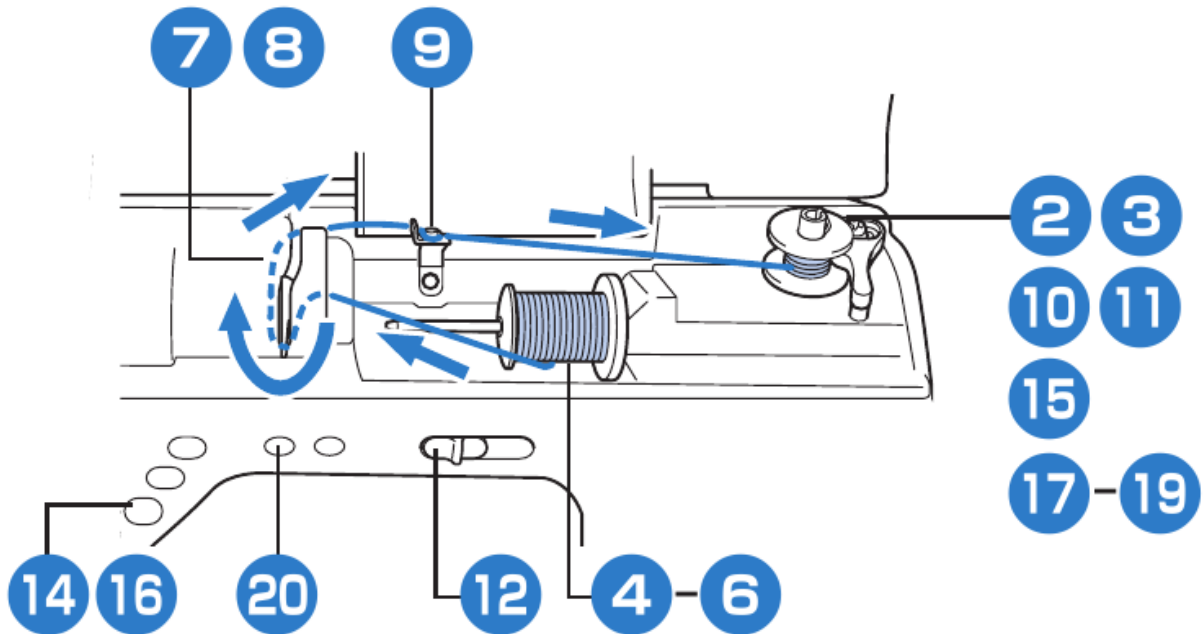
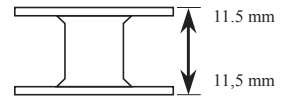
N°	Nom de la pièce	Code de la pièce	
		Continent américain	Autres
1	Pied pour quilting (courtepointe)	SA129	F005N: XC1948-052
2	Guide et pied pour quilting (courtepointe) 1/4" / pouce	SA185	F057: XC7416-252
3	Jeu de cadre de broderie (moyen) H 10 cm x L 10 cm (H 4" / pouces x L 4" / pouces)	SA443	EF83: XG2108-001
4	Jeu de cadre de broderie (petit) H 2 cm x L 6 cm (H 1" / pouce x L 2-1/2" / pouces)	SA442	EF82: XG2147-001
5	Fil de canette à broder (épaisseur 60, blanc/noir)	SA-EBT (blanc)/ SAEBT999 (noir)	EBT-CEN (blanc) : X81164-001/ EBT-CEN (noir) : XC5520-001
6	Ensemble pied pour point droit et plaque d'aiguille	SA564 SA564C (Canada)	SNP02: XG0946-001 SNP02AP: XG0948-001
7	Grande table d'extension	SAWT4	WT14: XG5051-001 WT14AP: XG4656-001
8	Pied à rouleau	SA190	F066: XF1723-001

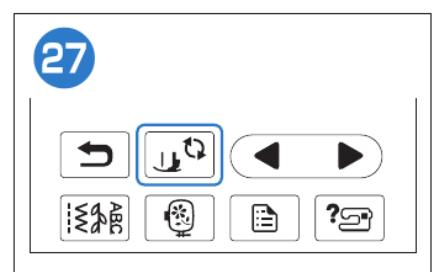
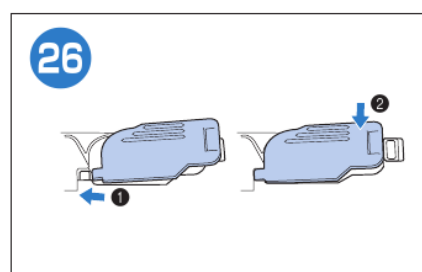
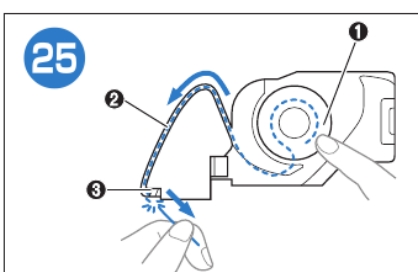
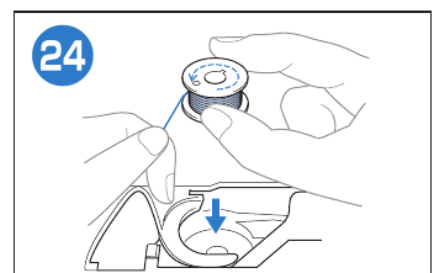
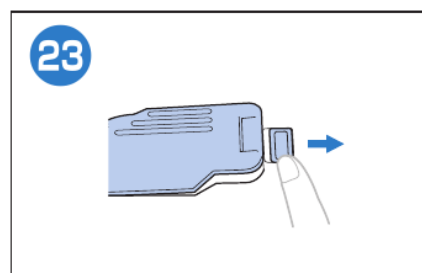
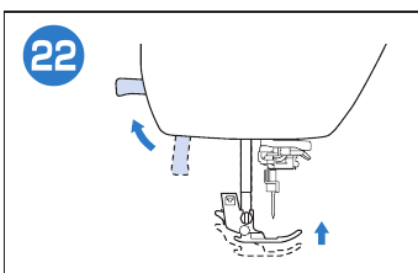
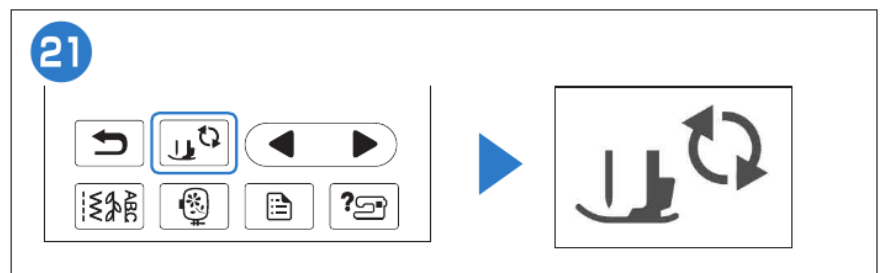
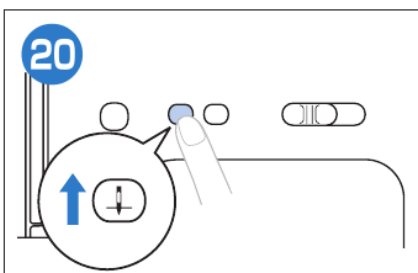
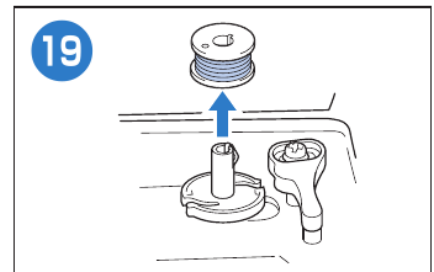
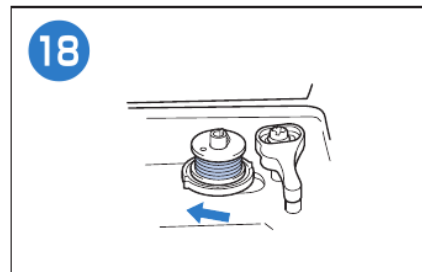
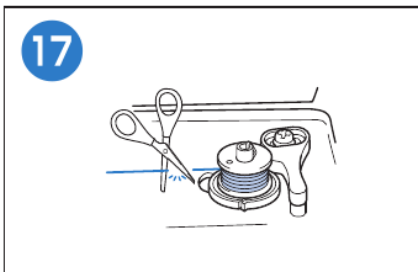
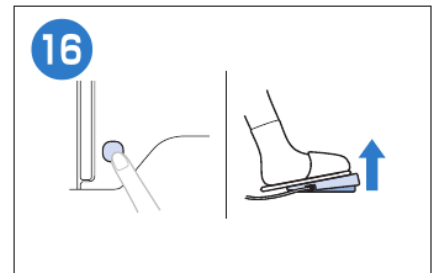
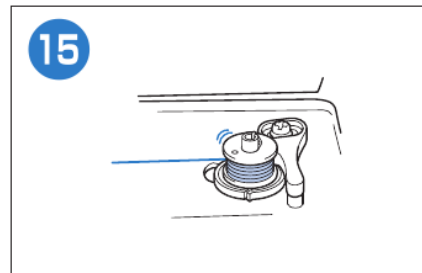
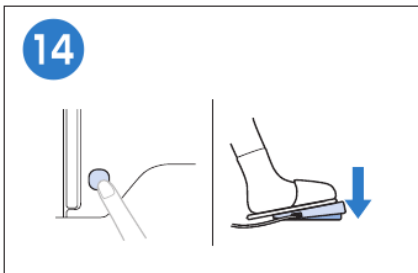
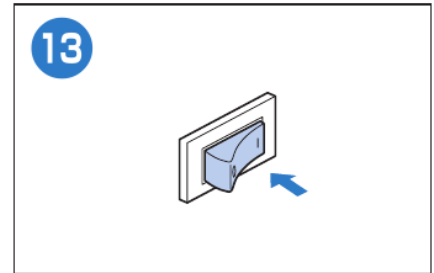
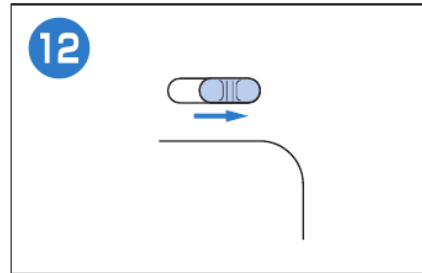
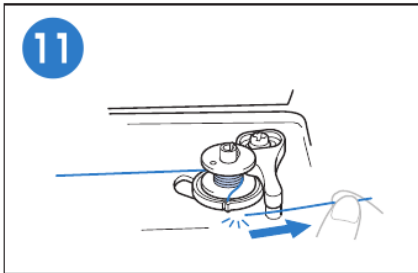
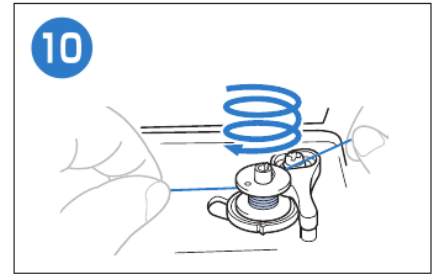
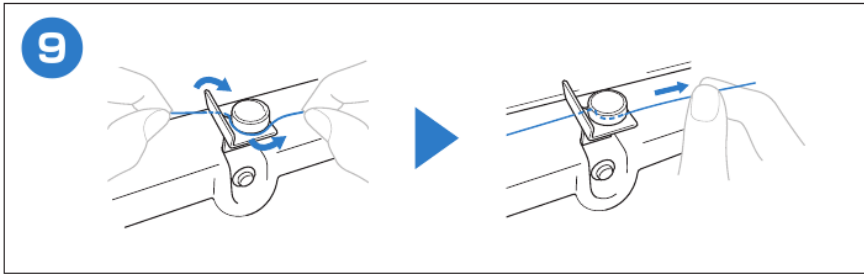


Bobinage/installation de la canette

Respectez les étapes ci-dessous, dans l'ordre numérique. Reportez-vous au Manuel d'instructions pour des informations détaillées.

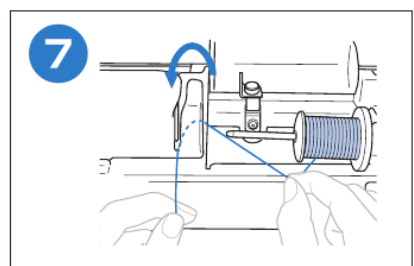
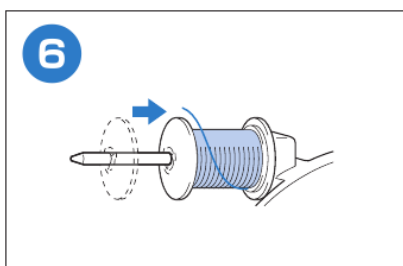
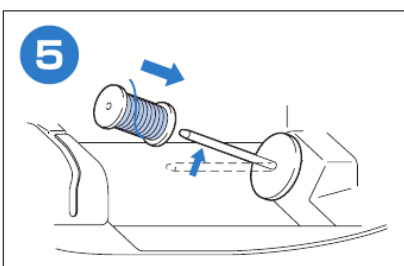
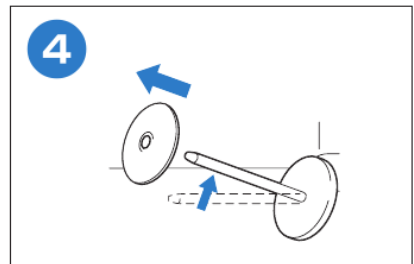
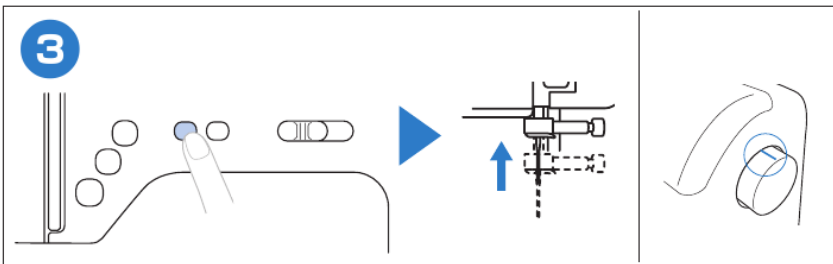
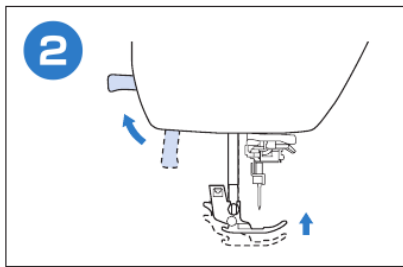
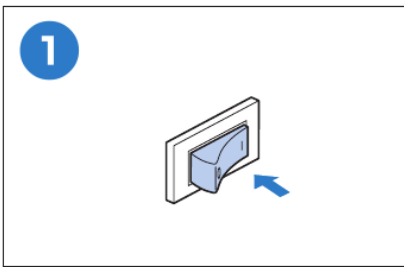
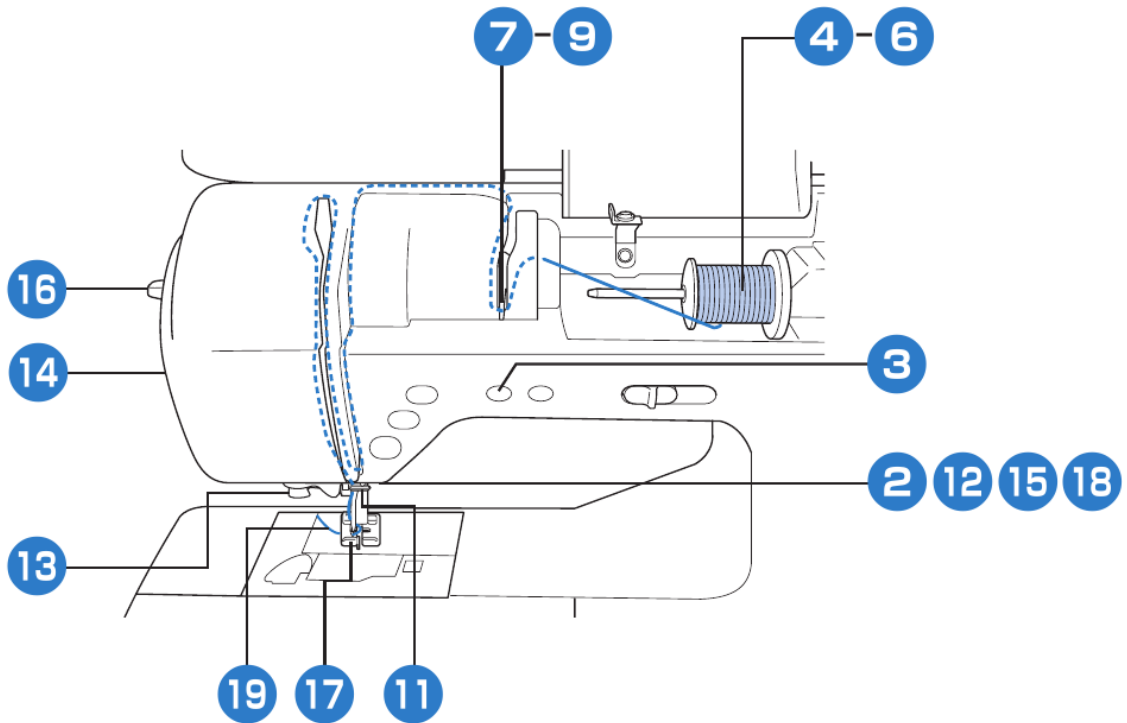
N'utilisez que la canette fournie ou des canettes du même type.

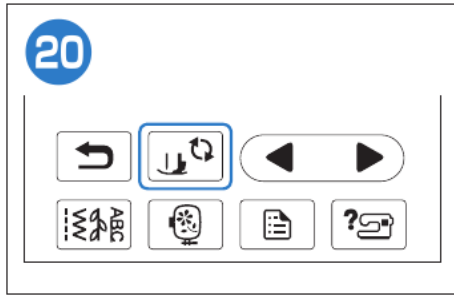
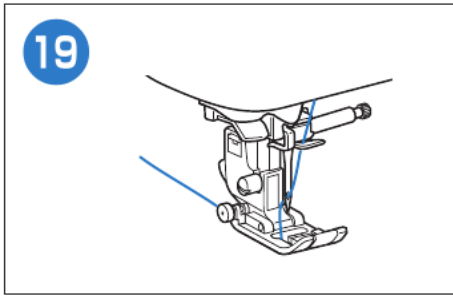
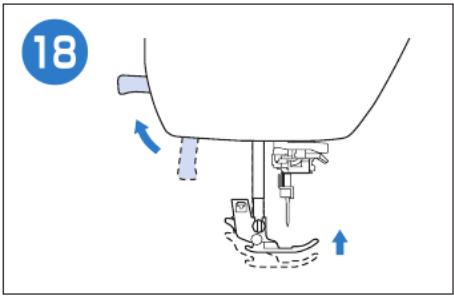
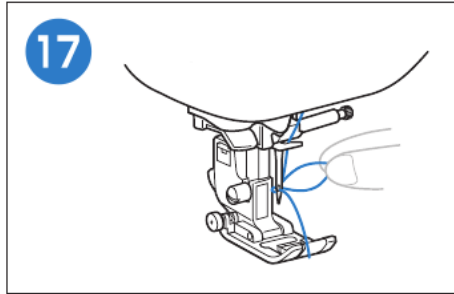
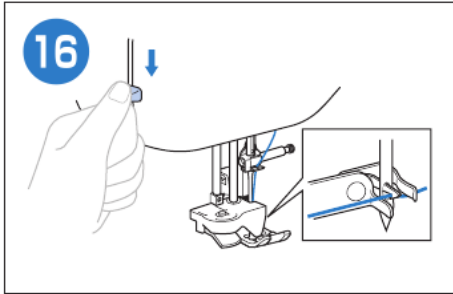
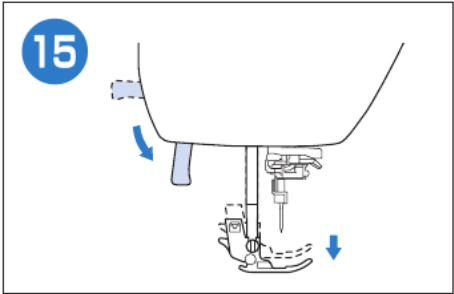
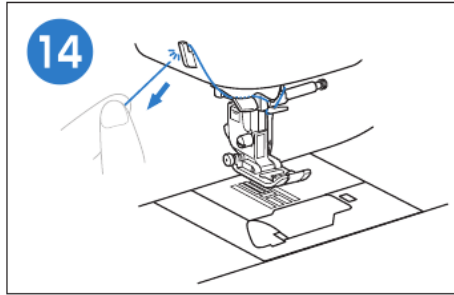
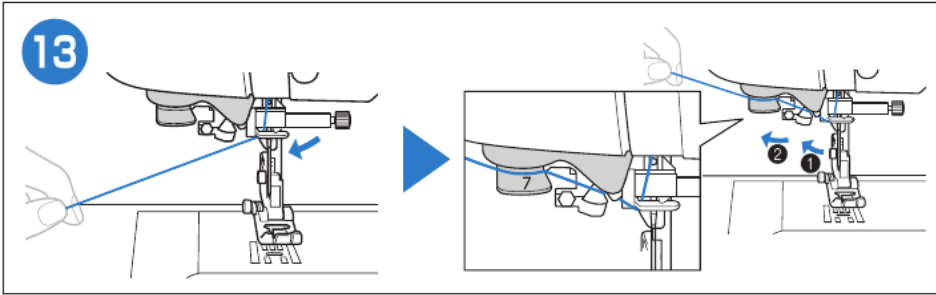
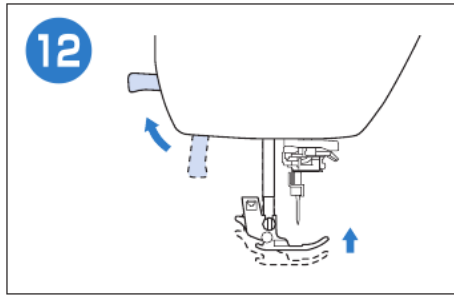
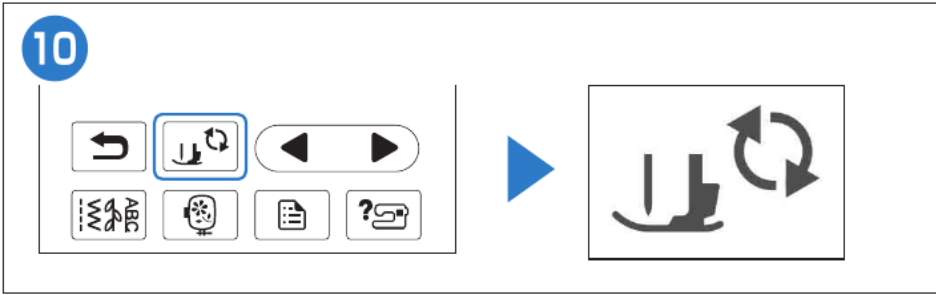
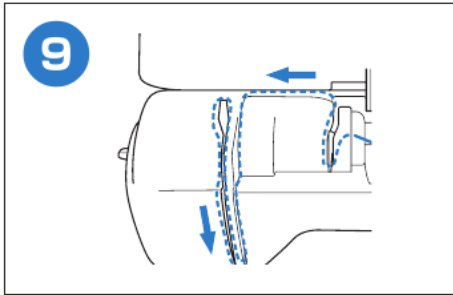
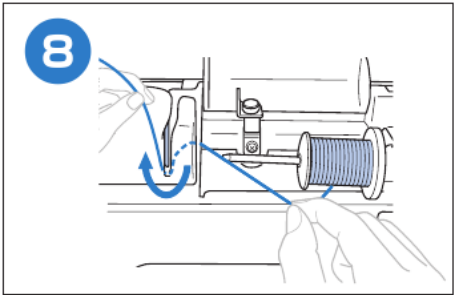






Enfilage supérieur



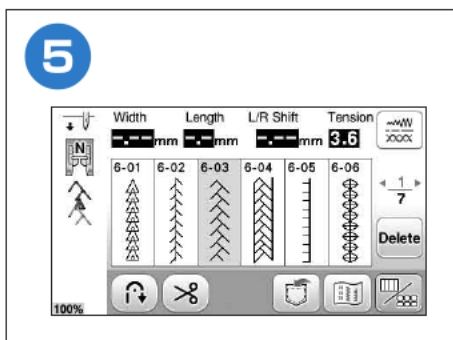
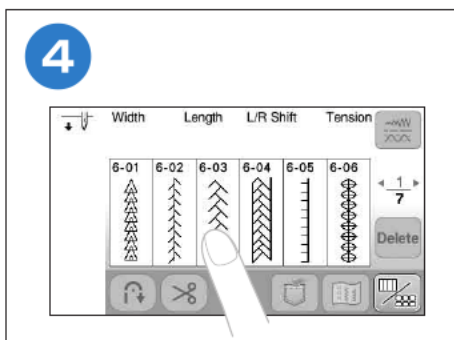
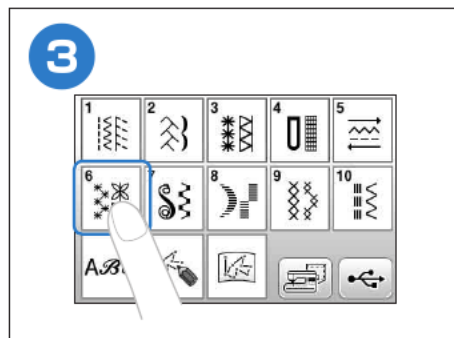
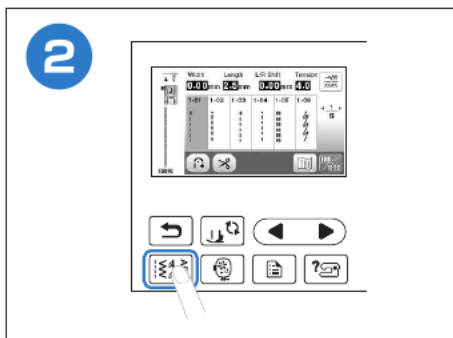
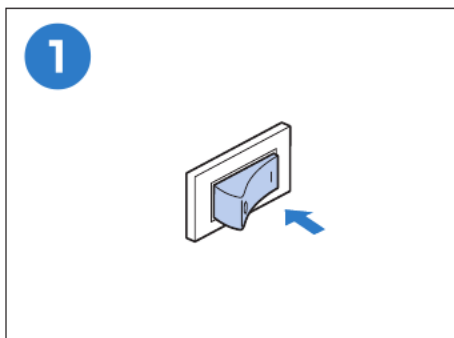


Sélection et couture de motifs

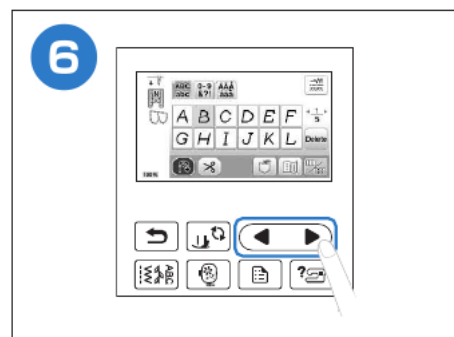
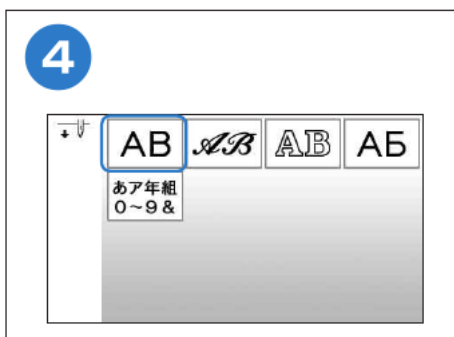
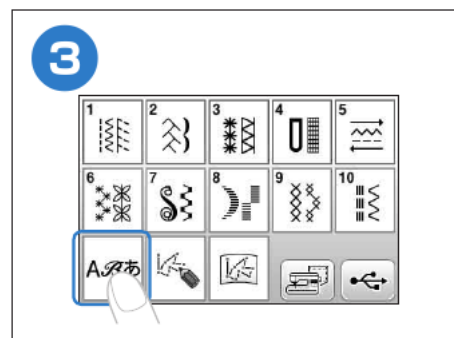
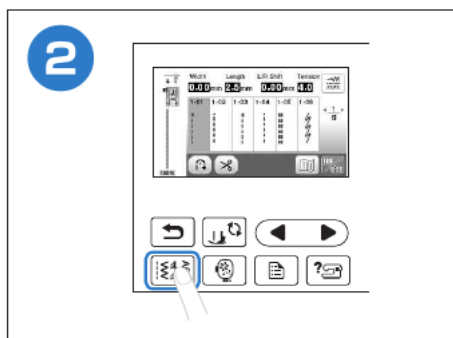
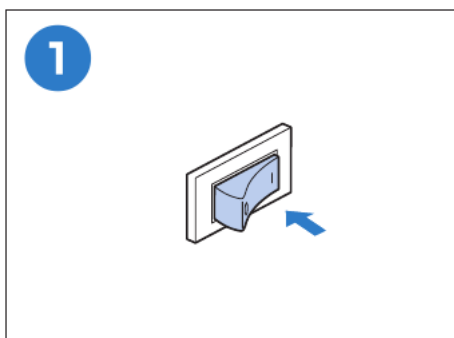
Points utilitaires

- 1
- 2
- 3
- 4
- 5
- 6
- 7
- 8
- 9
- 10
- 11
- 12
- 13

Points décoratifs

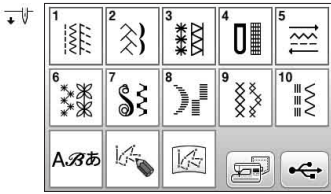


Points de caractères



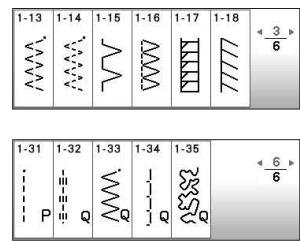
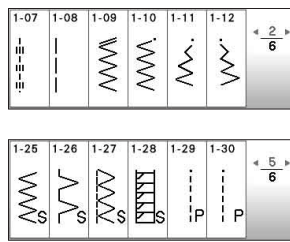
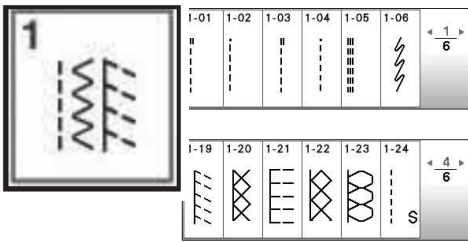


Sommaire des motifs de point

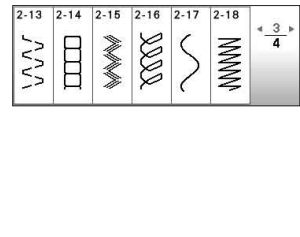
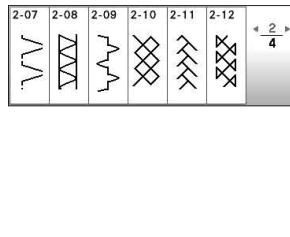
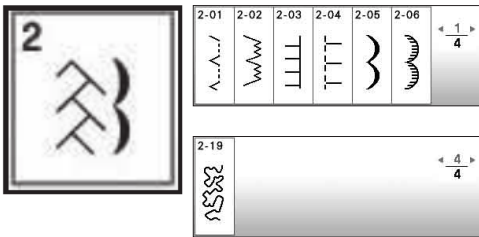


Points utilitaires

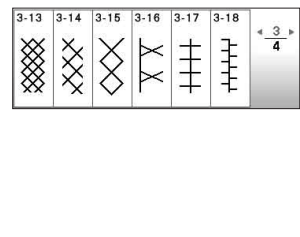
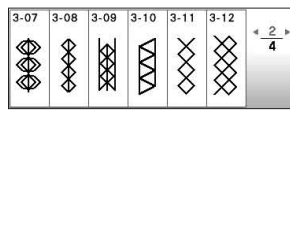
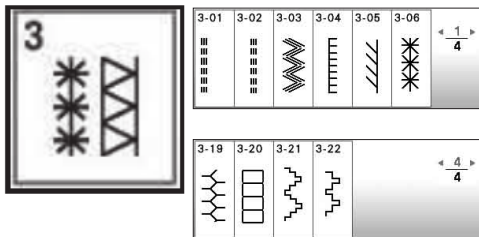
• 1-01~1-35



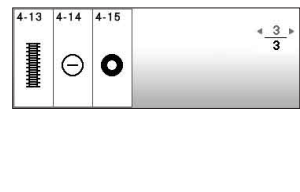
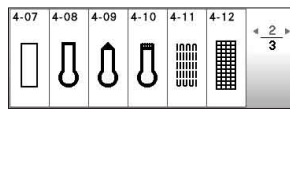
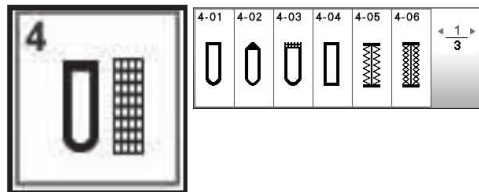
• 2-01~2-19



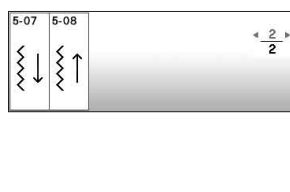
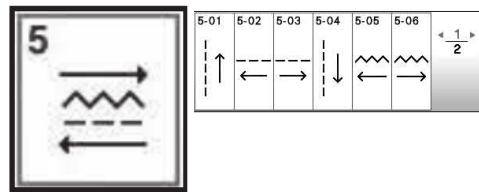
• 3-01~3-22



• 4-01~4-15

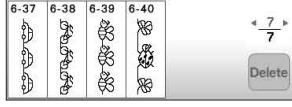
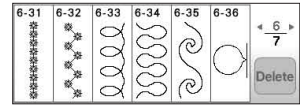
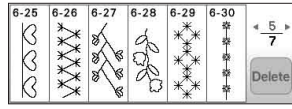
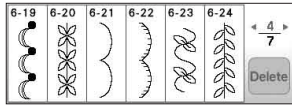
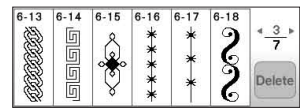
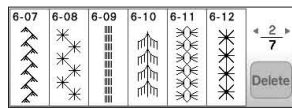
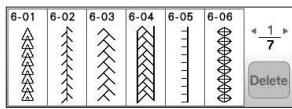


5-01~5-08

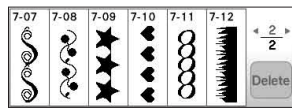
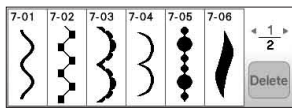


Points décoratifs

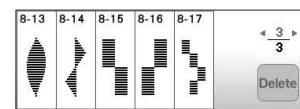
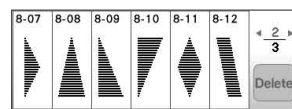
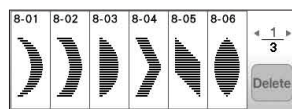
•6-01~6-40



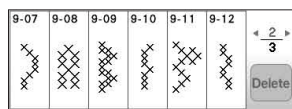
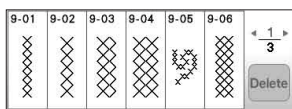
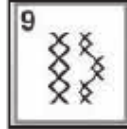
•7-01~7-12



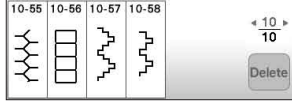
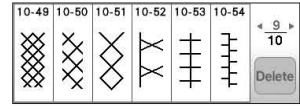
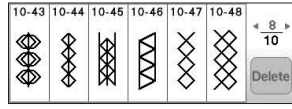
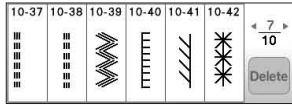
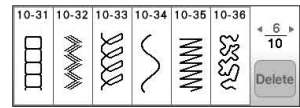
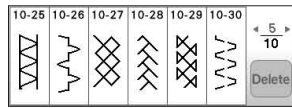
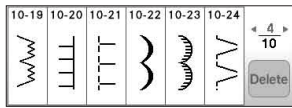
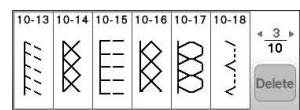
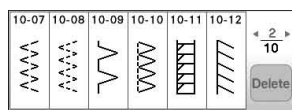
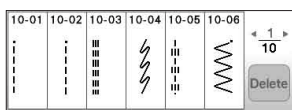
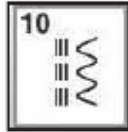
•8-01~8-17



•9-01~9-14



•10-01~10-58



Points de caractères

A.ア あ AB

ABC abc	0-9 &?! &?!	AAA aaa	~WV ~WV			
A	B	C	D	E	F	← 1/5 →
G	H	I	J	K	L	Delete

ABC abc	0-9 &?! &?!	AAA aaa	~WV ~WV			
M	N	O	P	Q	R	← 2/5 →
S	T	U	V	W	X	Delete

ABC abc	0-9 &?! &?!	AAA aaa	~WV ~WV			
Y	Z	α	b	c	d	← 3/5 →
e	f	g	h	i	j	Delete

ABC abc	0-9 &?! &?!	AAA aaa	~WV ~WV			
k	l	m	n	o	p	← 4/5 →
q	r	s	t	u	v	Delete

ABC abc	0-9 &?! &?!	AAA aaa	~WV ~WV		
w	x	y	z	_	← 5/5 →
Delete					

ABC abc	0-9 &?! &?!	AAA aaa	~WV ~WV			
0	1	2	3	4	5	← 1/5 →
6	7	8	9	#	%	Delete

ABC abc	0-9 &?! &?!	AAA aaa	~WV ~WV			
\$	£	€	¥	-	+	← 2/5 →
×	÷	=	*	.	,	Delete

ABC abc	0-9 &?! &?!	AAA aaa	~WV ~WV			
&	?	!	@	<	>	← 3/5 →
()	[]	/	\	Delete

ABC abc	0-9 &?! &?!	AAA aaa	~WV ~WV			
~	:	;	©	®	™	← 4/5 →
“	”	”	'	‘	’	Delete

ABC abc	0-9 &?! &?!	AAA aaa	~WV ~WV			
_						← 5/5 →
Delete						

ABC abc	0-9 &?! &?!	AAA aaa	~WV ~WV			
Â	Ä	Å	Æ	à	á	← 1/5 →
â	ã	ä	å	æ	ç	Delete

ABC abc	0-9 &?! &?!	AAA aaa	~WV ~WV			
ç	Ð	È	É	Ê	Ë	← 2/5 →
è	é	ê	ë	Í	Ï	Delete

ABC abc	0-9 &?! &?!	AAA aaa	~WV ~WV			
İ	ı	ı	ı	ı	Ñ	← 3/5 →
Ñ	ñ	Ò	Ö	Ø	Õ	Delete

ABC abc	0-9 &?! &?!	AAA aaa	~WV ~WV			
Œ	ò	ó	ô	ö	ø	← 4/5 →
ø	æ	ŗ	ţ	Û	Ü	Delete

ABC abc	0-9 &?! &?!	AAA aaa	~WV ~WV			
ù	ú	û	ü	z	þ	← 5/5 →
þ	ß	_	Delete			

A.ア あ AB

ABC abc	0-9 &?! &?!	AAA aaa	~WV ~WV			
À	B	C	D	E	F	← 1/5 →
G	H	I	J	K	L	Delete

ABC abc	0-9 &?! &?!	AAA aaa	~WV ~WV			
M	N	O	P	Q	R	← 2/5 →
S	T	U	V	W	X	Delete

ABC abc	0-9 &?! &?!	AAA aaa	~WV ~WV			
Y	Z	α	b	c	d	← 3/5 →
e	f	g	h	i	j	Delete

ABC abc	0-9 &?! &?!	AAA aaa	~WV ~WV			
k	l	m	n	o	p	← 4/5 →
q	r	s	t	u	v	Delete

ABC abc	0-9 &?! &?!	AAA aaa	~WV ~WV		
w	x	y	z	_	← 5/5 →
Delete					

ABC abc	0-9 &?! &?!	AAA aaa	~WV ~WV			
0	1	2	3	4	5	← 1/5 →
6	7	8	9	#	%	Delete

ABC abc	0-9 &?! &?!	AAA aaa	~WV ~WV			
\$	£	€	¥	-	+	← 2/5 →
×	÷	=	*	.	,	Delete

ABC abc	0-9 &?! &?!	AAA aaa	~WV ~WV			
&	?	!	@	<	>	← 3/5 →
()	[]	/	\	Delete

ABC abc	0-9 &?! &?!	AAA aaa	~WV ~WV			
~	:	;	©	®	™	← 4/5 →
“	”	”	'	‘	’	Delete

ABC abc	0-9 &?! &?!	AAA aaa	~WV ~WV			
_						← 5/5 →
Delete						

ABC abc	0-9 &?! &?!	AAA aaa	~WV ~WV			
À	Ä	Å	Æ	à	á	← 1/5 →
â	ã	ä	å	æ	ç	Delete

ABC abc	0-9 &?! &?!	AAA aaa	~WV ~WV			
ç	Ð	È	É	Ê	Ë	← 2/5 →
è	é	ê	ë	Í	Ï	Delete

ABC abc	0-9 &?! &?!	AAA aaa	~WV ~WV			
İ	ı	ı	ı	ı	Ñ	← 3/5 →
Ñ	ñ	Ò	Ö	Ø	Õ	Delete

ABC abc	0-9 &?! &?!	AAA aaa	~WV ~WV			
Œ	ò	ó	ô	ö	ø	← 4/5 →
ø	æ	ŗ	ţ	Û	Ü	Delete

ABC abc	0-9 &?! &?!	AAA aaa	~WV ~WV			
ù	ú	û	ü	z	þ	← 5/5 →
þ	ß	_	Delete			

Aあ

AB

ABC	0-9	AAA
abc	&?!	aaa
A	B	C
D	E	F
G	H	I
J	K	L

ABC	0-9	AAA
abc	&?!	aaa
M	N	O
P	Q	R
S	T	U
V	W	X

ABC	0-9	AAA
abc	&?!	aaa
Y	Z	a
b	c	d
e	f	g
h	i	j

ABC	0-9	AAA
abc	&?!	aaa
k	l	m
n	o	p
q	r	s
t	u	v

ABC	0-9	AAA
abc	&?!	aaa
w	x	y
z	_	

ABC	0-9	AAA
abc	&?!	aaa
0	1	2
3	4	5
6	7	8
9	#	%

ABC	0-9	AAA
abc	&?!	aaa
\$	€	¢
¥	¤	+
×	÷	≡
*	°	,

ABC	0-9	AAA
abc	&?!	aaa
&	?	!
@	<	>
()	[
]	/	\

ABC	0-9	AAA
abc	&?!	aaa
~	°	°
©	®	™
σ	ρ	π
φ	ψ	

ABC	0-9	AAA
abc	&?!	aaa
_		

ABC	0-9	AAA
abc	&?!	aaa
À	Á	Â
Ã	Ä	Å
Æ	à	á
â	ã	ä
å	æ	ç

ABC	0-9	AAA
abc	&?!	aaa
Ç	Ð	É
Ê	Ë	Ì
Í	Î	Ï
È	É	Ê
Ë	Ì	Í

ABC	0-9	AAA
abc	&?!	aaa
İ	ı	í
î	ï	ñ
ň	õ	ö
ø	ó	

ABC	0-9	AAA
abc	&?!	aaa
œ	ò	ó
ô	õ	ø
ó	œ	ř
ť	ú	û

ABC	0-9	AAA
abc	&?!	aaa
ù	ú	û
ü	ý	ÿ
ÿ	ß	

Aあ

AB

ABВ	абв	0-9
	&?!	
A	B	В
Г	Д	Е
Ё	Ж	З
И	Й	К

ABВ	абв	0-9
	&?!	
Л	М	Н
О	П	Р
С	Т	У
Ф	Х	Ц

ABВ	абв	0-9
	&?!	
Ч	Ш	Щ
Ъ	Ы	Ь
Э	Ю	Я
Г	Е	І

ABВ	абв	0-9
	&?!	
İ	ı	ñ
ň	ı	ъ
ь	ц	ѓ
ѕ	ќ	_

ABВ	абв	0-9
	&?!	
а	б	в
г	д	е
ё	ж	з
и	й	к

ABВ	абв	0-9
	&?!	
л	м	н
о	п	р
с	т	у
ф	х	ц

ABВ	абв	0-9
	&?!	
ч	ш	щ
ъ	ы	ь
э	ю	я
г	е	і

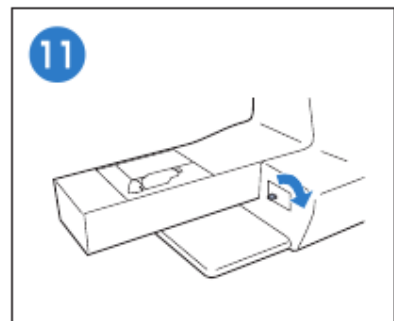
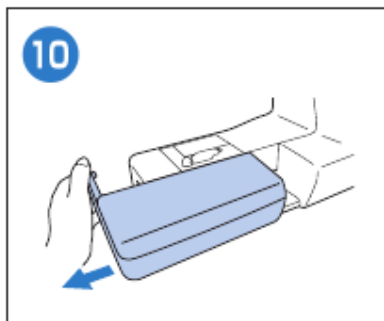
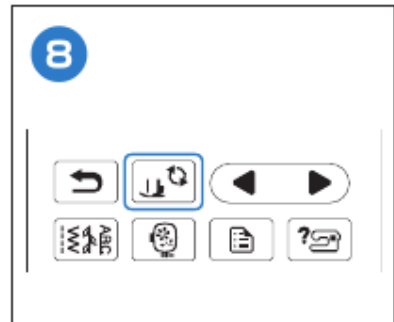
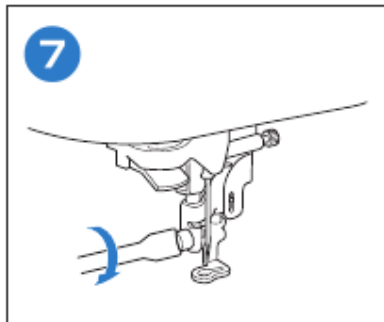
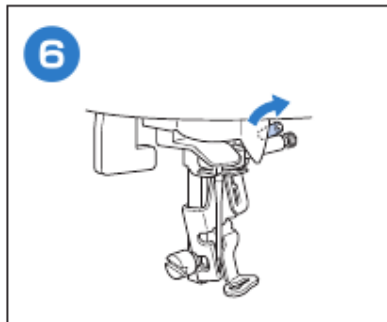
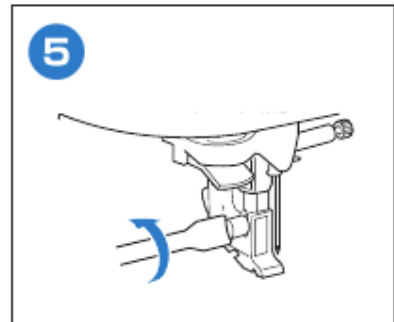
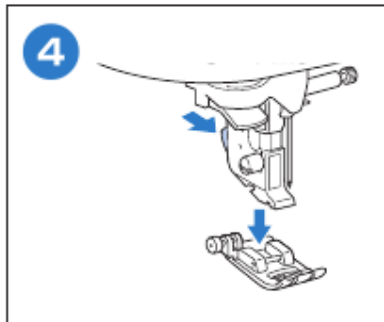
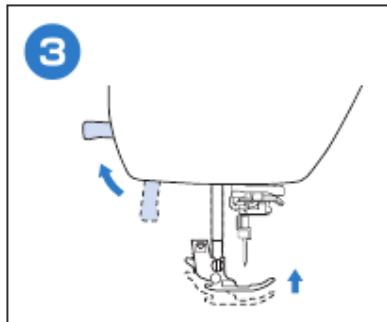
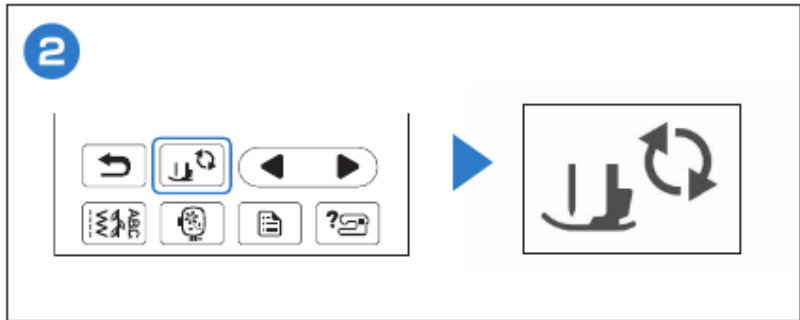
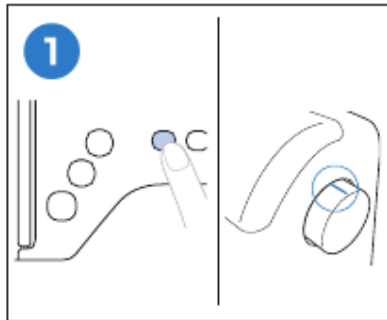
ABВ	абв	0-9
	&?!	
ı	ñ	ň
ı	ъ	ь
ь	ц	ѓ
ѕ	ќ	_

ABВ	абв	0-9
	&?!	
0	1	2
3	4	5
6	7	8
9	-	.

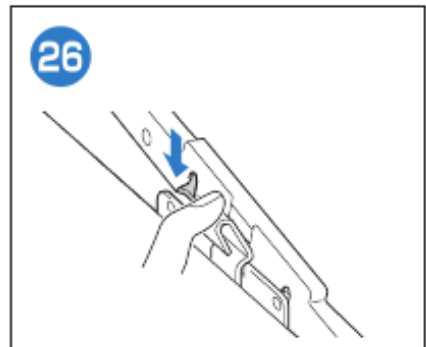
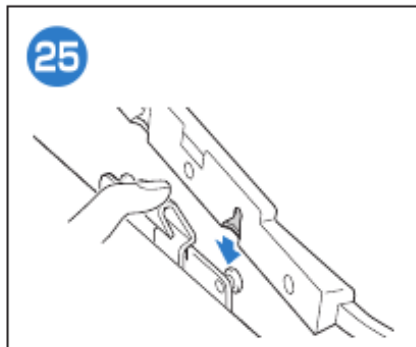
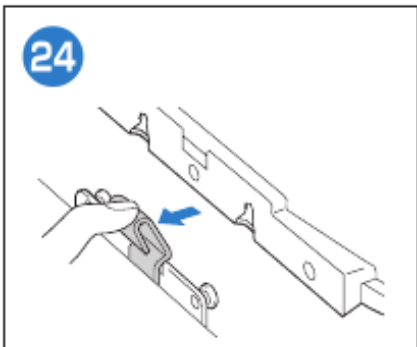
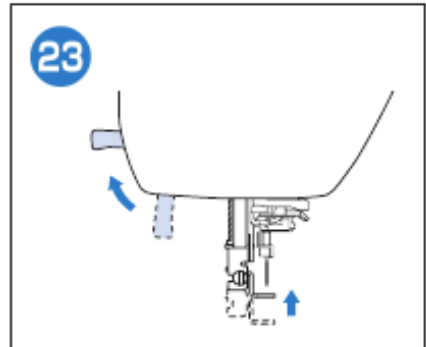
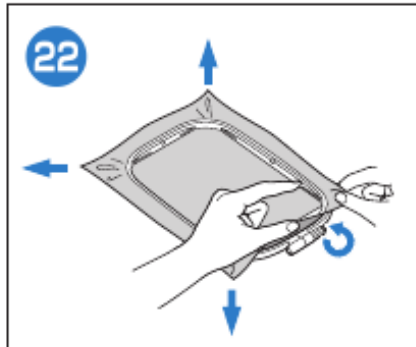
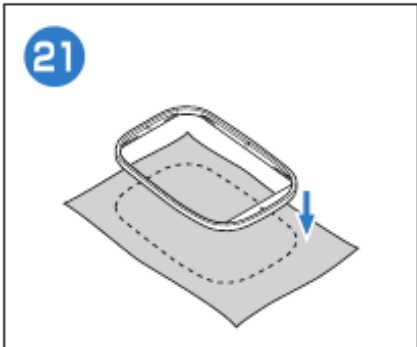
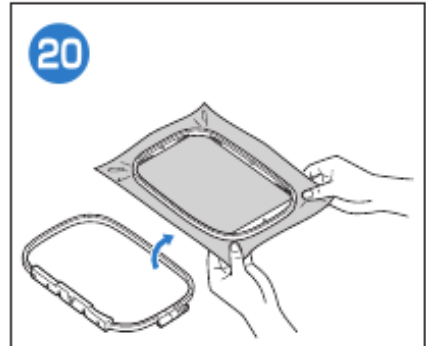
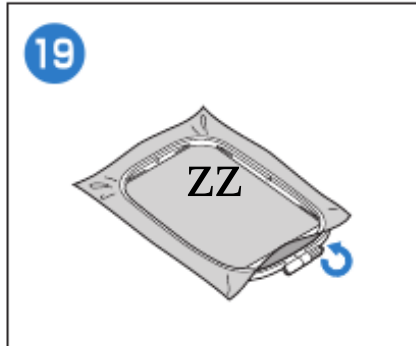
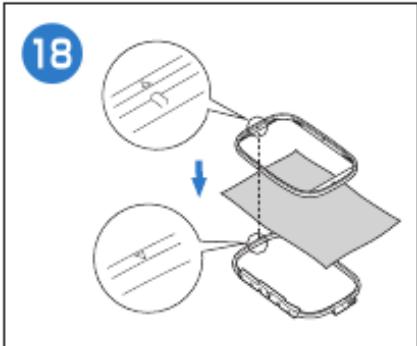
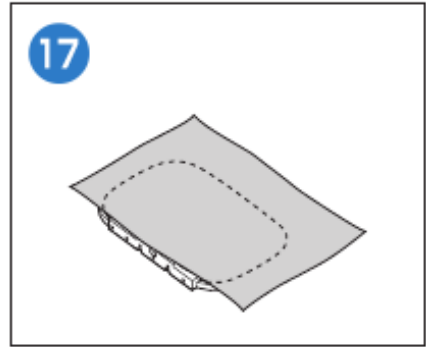
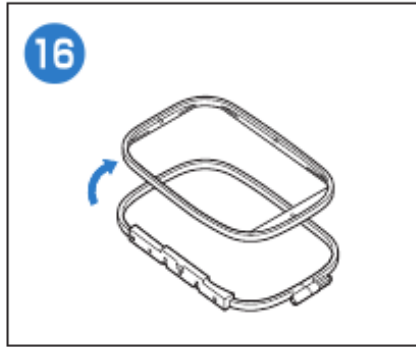
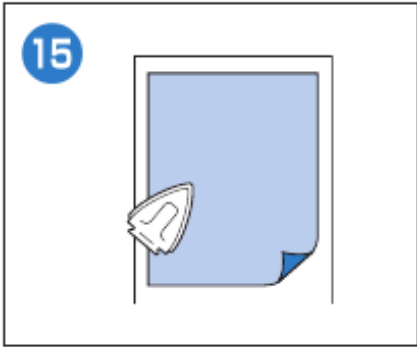
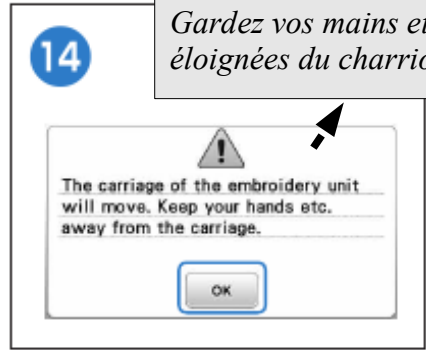
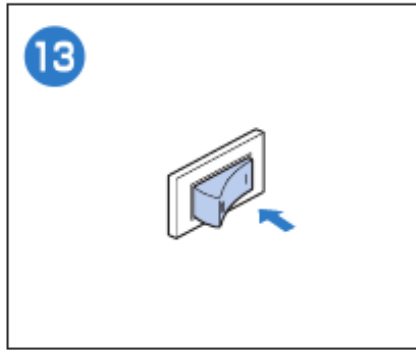
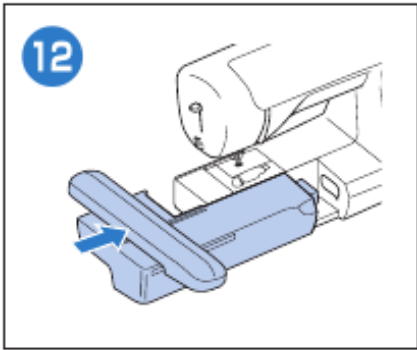
ABВ	абв	0-9
	&?!	
,	&	?
!	()
/	'	_



Préparation de la broderie



Le charriot de l'unité de broderie va se mettre en mouvement. Gardez vos mains etc. éloignées du charriot.





Sélection des motifs de broderie

